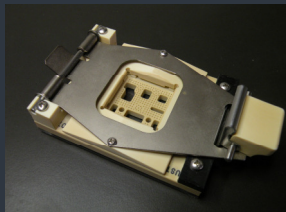
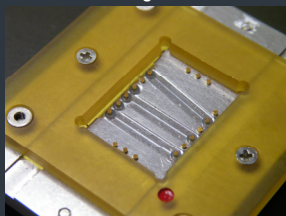


## FUZZ BUTTON® TEST SOCKETS



RF / Coaxial designs also available



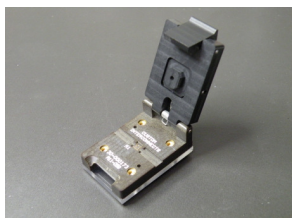
**Custom Interconnects**

For over twenty years, the exclusive supplier of high performance Fuzz Button® Interconnect solutions to military and commercial customers worldwide.

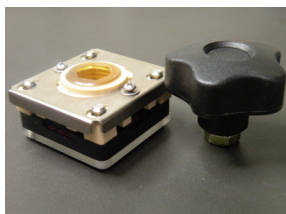
For more product information, please visit our website:  
www.custominterconnects.com

Custom Interconnects  
2055 S. Raritan St, Unit A  
Denver, CO 80223

sales@custominterconnects.com  
Phone: 303-934-6600  
Fax: 303-934-6606



Clamshell Socket



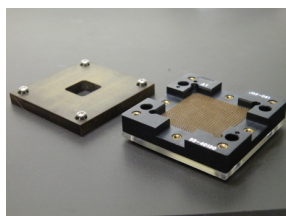
Slidelock™ Socket (shown with removable adjustment knob)

### Markets

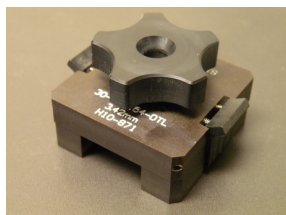
Aerospace  
Military  
Medical  
Communications  
Semiconductor  
Automotive  
RF / Coaxial

### Applications

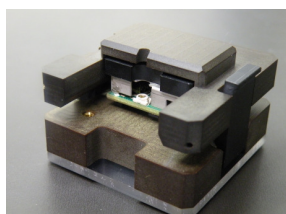
Bench Testing  
Design Verification  
Production Testing  
Matching ATE Platforms  
Specialized Burn-in  
Power IC Testing  
Coaxial Signal Testing



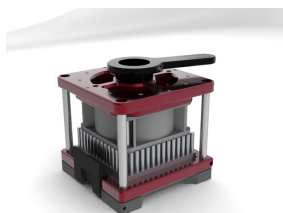
Simple Lid / Open Face Socket



Dual Thumb Latch Socket



Custom Hand Clamp Socket



Heat Sink & Cooling Fan integration also available

Custom Interconnects designs and manufactures a full line of test sockets and fixtures that deliver the kind of performance you expect from an industry bellwether. Our decades of design expertise is combined with the superior signal integrity of our proprietary Fuzz Button® technology resulting in a test platform in which you “see” your device, not our socket.

- ◆ Optimal Signal Integrity
- ◆ Impedance Matching
- ◆ Up to 40 GHz Frequency
- ◆ Temperature Extremes
- ◆ Solves Planarity Issues
- ◆ Fully Compliant Mating
- ◆ Fine Pitch
- ◆ Solderless Contacts
- ◆ High Current Capable
- ◆ A Proven Approach

### Technical Specifications

Applications	LGA, BGA, PGA, CGA, QFN
Contact Pitch	.5mm and Above
Current Capability	5 Amps Continuous
Min/Max IO	1/5000 contacts
Operating Temperature	-60°C – 150°C
Mating Cycles	Up to 5,000
Mating Cycles with Hardhats	Up to 500,000
Compression/Force	34 grams per IO
Crosstalk/Bandwidth	-20dB@10GHz
Insertion Loss/Bandwidth (S21)	-2.2dB@10GHz / -1dB@26GHz
Return Loss/Bandwidth (S11)	-15dB@10GHz
Self/Mutual Inductance	0.19nH/0.03nH
Ground/Mutual Capacitance	0.16pF/0.008pF
Resistance	<10mΩ
Rise Time/Fall Time	50ps/50ps

Note: Values shown for 1mm pitch / .020” diameter, specs differ for other sizes

